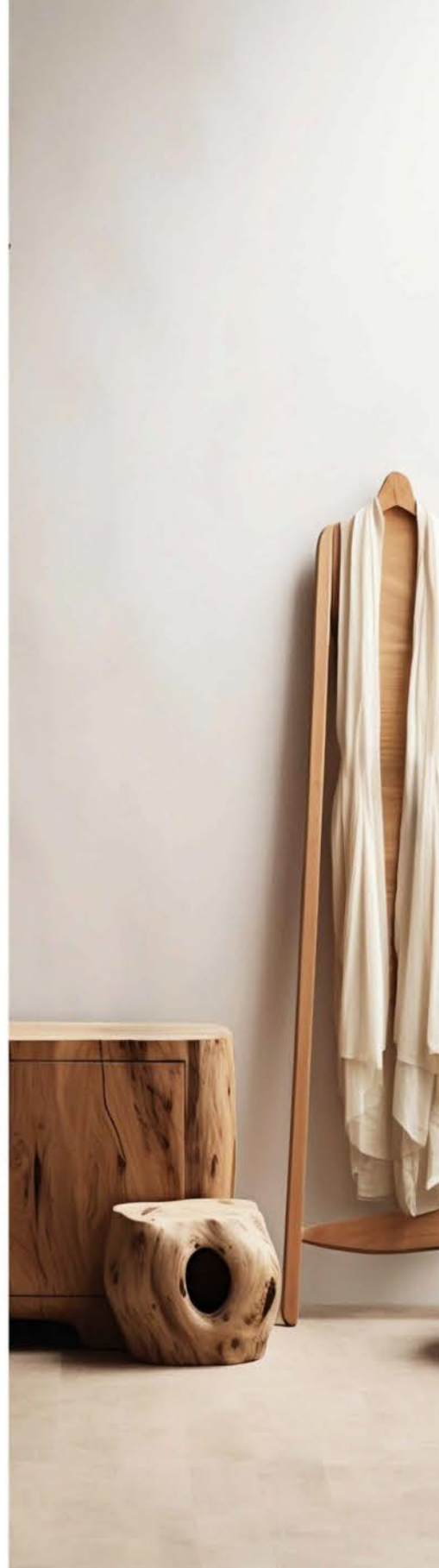


SPC

Collection



Luxury Flooring



What is SPC !

- > SPC (Stone Plastic Composite) is an engineered luxury vin that combines limestone and stabilizers to create an extremely durable core. SPC flooring is up to the task in both residential and commercial settings.
- > SPC Wooden flooring is the very much popular option for floors in use today. The pattern enables a plethora of colours and grains to be displayed side by side.
- > SPC flooring is very easy in installing as well. Any layment even can install the product. It comes with unique Uniclick technology. This glueless locking technology for flooring works perfectly for both the long and short sides of the flooring panel. In addition to that, Uniclick is a locking system that is suitable for all types of materials starting from 3.2 mm.
- > SPC flooring is constructed in a way as Engineered wood that gives it greater stability and resistance to changes in temperature and humidity.
- > The Good part is that it looks like hardwood flooring because the top floor is real, but all the underneath is an SPC rigid core which makes the product more better for commercial and residential uses.



Layers of Rigid Core Luxury Vinyl Flooring are :

- 1 - UV Coating
- 2 - Wear Layer
- 3 - Decore Film
- 4 - Rigid SPC Core
- 5 - Attached Underlayment

SPC Core

- > SPC flooring contains a solid, waterproof core that won't ripple or swell no matter how much liquid you subject it to..
- > The core is ultra-dense with no foaming agents. You'll find it in traditional WPC flooring. It gives you slightly less softness underfoot, Although it makes the flooring extra durable and long lasting.





I am
Easy Installation.



Uniclic Technology



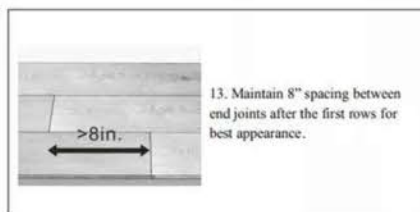
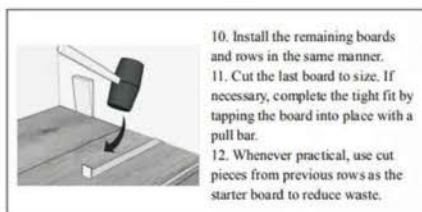
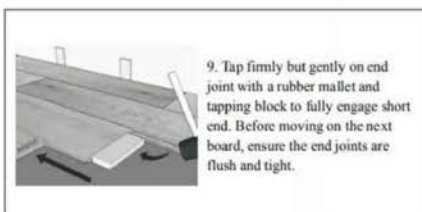
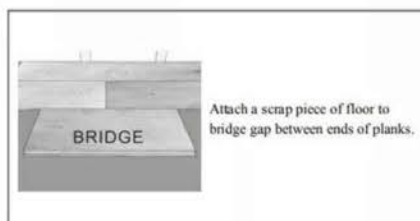
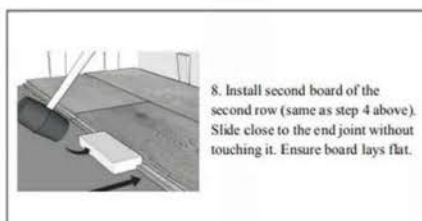
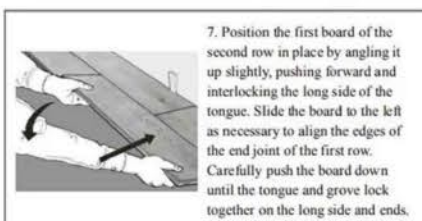
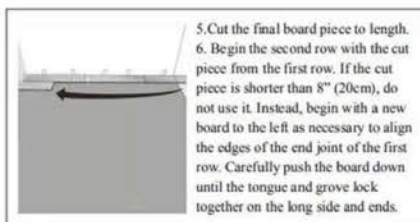
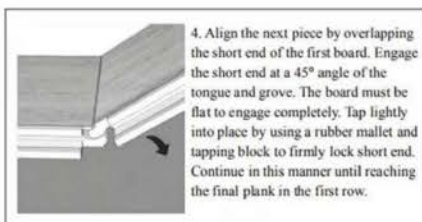
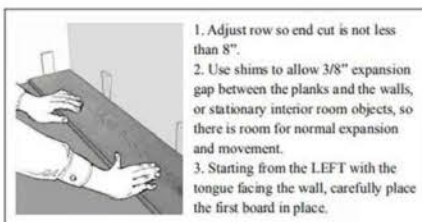
> Uniclic was the first one-piece locking profile to be introduced to the market. Over the years it became the industry's favorite locking technology thanks to its unmatched production efficiency and technical performance.

There are many advantages of the Uniclic locking system that makes the product more easy and simple to use.

1. Uniclic is fast and simple
2. it has to be installed by an angular rotation movement.
3. can also be installed in a horizontal way by snapping the planks into each other.
4. no unwanted gaps or spaces between floorboards.
5. no height differences and a seamless joint
6. Uniclic profiles interlock very securely.
7. Ensured Long- Lasting Stability



SPC Flooring Installation



How to install the SPC Flooring?

- > 1. Adjust row so end cut is not less than 8".
- > 2. Use shims to allow 3/8" expansion gap between the planks and the walls, or stationary interior room objects, so there is room for normal expansion and movement.
- > 3. Starting from the LEFT with the tongue facing the wall, carefully place the first board in place.
- > 4. Align the next piece by overlapping the short end of the first board, Engage the short end at a 45° angel of the tongue and groove. The board must be flat to engage completely. Tap lightly into place by using a rubber mallet and tapping block to firmly lock short end. Continue in this manner until reaching the final plank in the first row.
- > 5. Cut the final board piece to length.
- > 6. Begin the second row with the cutpiece from the first row. If the cut piece is shorter than 8" (20cm), do not use it. Instead, begin with a new board to the left as necessary to align the edges of the end joint of the first row. Carefully push the board down until the gongue and groove lock together on the long side and ends.
- > 7. Position the first board of the second row in place by engling it up slightly, pushing forward and interlocking the long side of the tongue. Slide the board to the left as necessary to align the edges of the end joint of the first row.Carefully pushthe board down until the tongue and groove lock together on the long side and ends.
- > 8. Install second board of the second row (same as step 4 above). Slide close to the end joint without touching it. Ensure board lays flat.Attach a scrap piece of floor to bridge gap between ends of planks.
- > 9. Tap firmly but gently on end joint with a rubber mallet and tapping block to fully engage short end. Before moving on the next board, ensure the end joints are flush and tight.
- > 10. Install the remaining boards and rows in the same container.
- > 11. Cut the last board to size. If necessary, complete the tight fit by tapping the board into place with a pull bar.
- > 12. Whenever practical, use cut pieces from previous rows as the starter board to reduce waste.
- > 13. Maintain 8" spacing between end joints after the first rows for best apperance.

Advantages of SPC Vinyl Tiles



100% Waterproof



Termite proof



Stain Resistant



Anti slip



Pet friendly



Ecological



Easy to clean



Quick & Easy
to install



Superior scratch
resistance



Fire Resistant



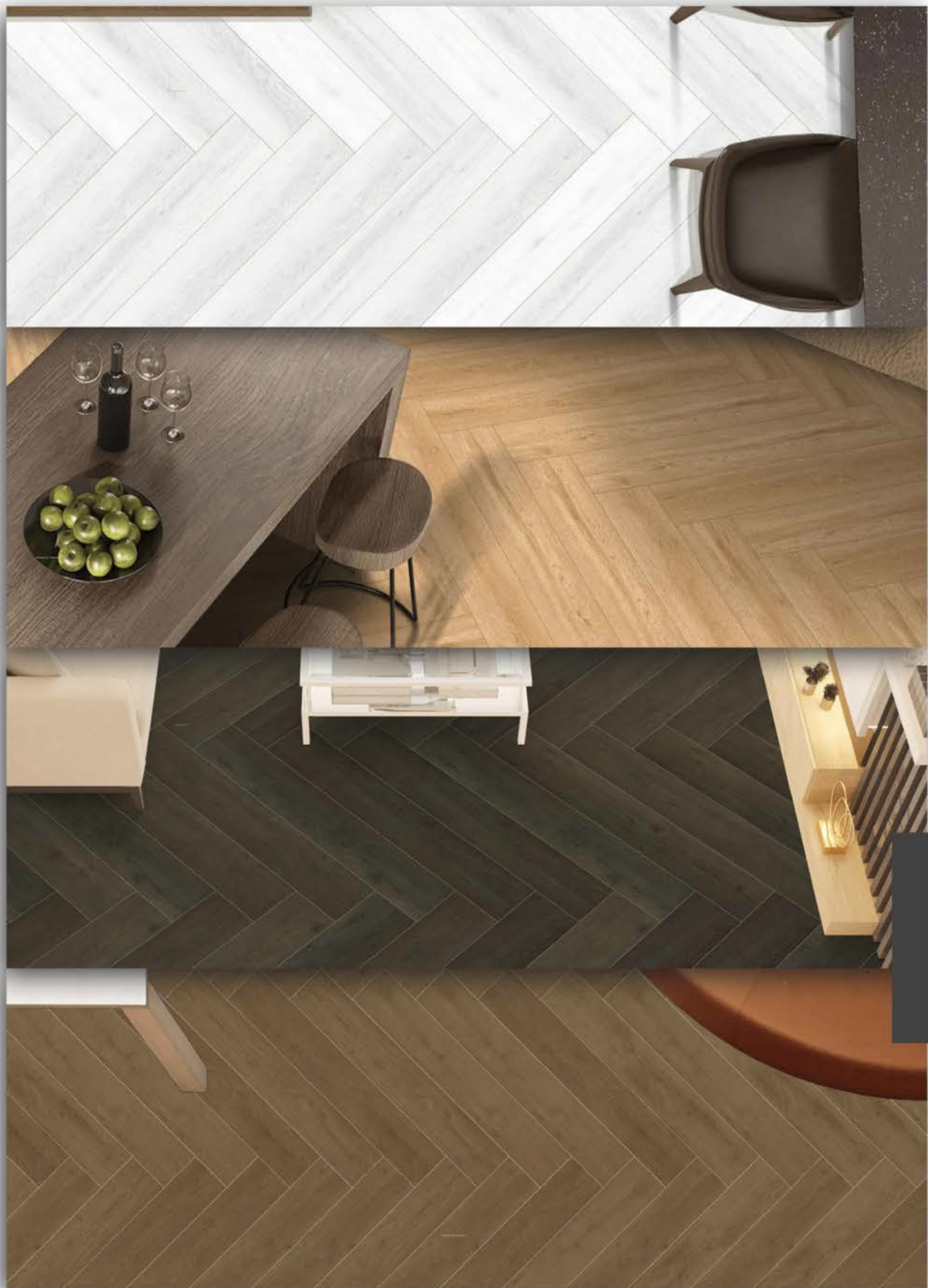
Easy logistics



Recyclable



Reduce noise



*“We are not
the makers
OF HISTORY,
WE ARE MADE BY
history”*



Herringbone

Herringbone



Double Herringbone

Double Herringbone

**First Time in India by
Indian Global**

Style Up Your Flooring With

Herringbone

collection



QSW-421



QSW-422



QSW-423



QSW-424



QSW-425



QSW-426



QSW-427



QSW-428



QSW-429



QSW-430



QSW-431



QSW-432



QSW-433



QSW-434



QSW-435



QSW-436



QSW-437



QSW-438



QSW-439



QSW-440



QSW-441



QSW-442



QSW-443



QSW-444



QSW-445



QSW-446



QSW-447



QSW-448



QSW-449



QSW-450



QSW-451



QSW-452



QSW-453



QSW-454



QSW-455



QSW-456



QSW-457



QSW-458



QSW-459



QSW-460



QSW-461



QSW-462



QSW-463



QSW-464



QSW-465



QSW-466



QSW-467



QSW-468



QSW-469



QSW-470

QSW-421



SPANISH CEDAR

THICKNESS

5 to 7.5 MM

IXPE

1 AND 1.5 MM

WEAR LAYER

0.3 AND 0.5 MM

SIZE

180 X 1220 MM
228.6 X 1219.2 MM
228.6 X 1524 MM

FINISH

EMBOSSED MATT

INSTALLATION METHOD

UNILIN UNICLIC



SCAN AND SEE THE
LIVE PHOTOS



IMAGES ARE FOR REPRESENTATION PURPOSE ONLY AND ACTUAL PRODUCT MAY VARY

QSW-422



WHITE LIMBA WOOD

THICKNESS

5 to 7.5 MM

IXPE

1 AND 1.5 MM

WEAR LAYER

0.3 AND 0.5 MM

SIZE

180 X 1220 MM
228.6 X 1219.2 MM
228.6 X 1524 MM

FINISH

EMBOSSSED MATT

INSTALLATION METHOD

UNILIN UNICLIC



SCAN AND SEE THE
LIVE PHOTOS



IMAGES ARE FOR REPRESENTATION PURPOSE ONLY AND ACTUAL PRODUCT MAY VARY

QSW-423



TIGER WOOD

THICKNESS

5 to 7.5 MM

IXPE

1 AND 1.5 MM

WEAR LAYER

0.3 AND 0.5 MM

SIZE

180 X 1220 MM
228.6 X 1219.2 MM
228.6 X 1524 MM

FINISH

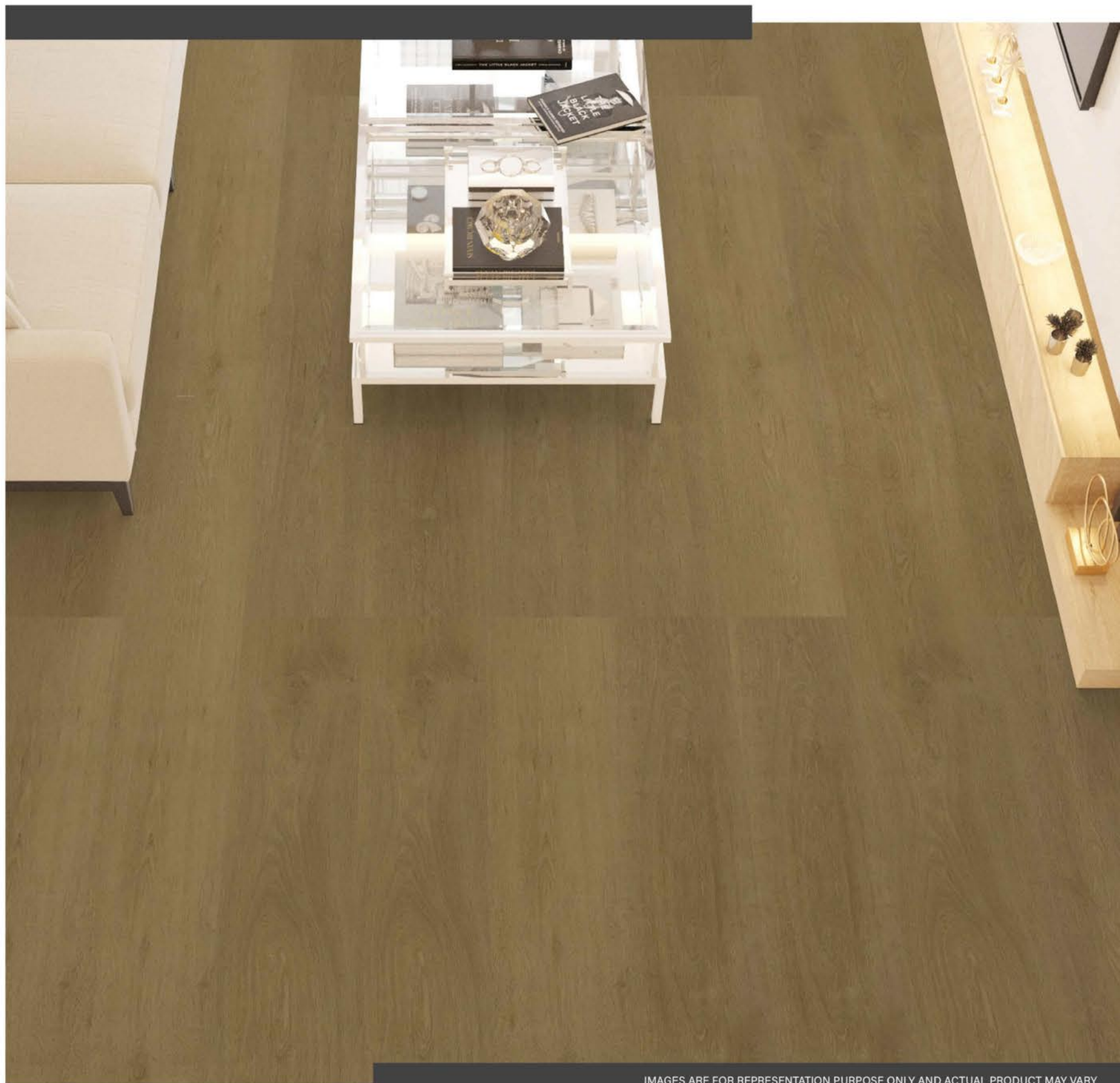
EMBOSSED MATT

INSTALLATION METHOD

UNILIN UNICLIC



SCAN AND SEE THE
LIVE PHOTOS



QSW-424



RED BEECH

THICKNESS

5 to 7.5 MM

IXPE

1 AND 1.5 MM

WEAR LAYER

0.3 AND 0.5 MM

SIZE

180 X 1220 MM
228.6 X 1219.2 MM
228.6 X 1524 MM

FINISH

EMBOSSED MATT

INSTALLATION METHOD

UNILIN UNICLIC



SCAN AND SEE THE
LIVE PHOTOS



IMAGES ARE FOR REPRESENTATION PURPOSE ONLY AND ACTUAL PRODUCT MAY VARY

QSW-425



DEEP CHARCOAL

THICKNESS

5 to 7.5 MM

IXPE

1 AND 1.5 MM

WEAR LAYER

0.3 AND 0.5 MM

SIZE

180 X 1220 MM
228.6 X 1219.2 MM
228.6 X 1524 MM

FINISH

EMBOSSED MATT

INSTALLATION METHOD

UNILIN UNICLIC



SCAN AND SEE THE
LIVE PHOTOS



IMAGES ARE FOR REPRESENTATION PURPOSE ONLY AND ACTUAL PRODUCT MAY VARY

QSW-426



BUTTERNUT

THICKNESS

5 to 7.5 MM

IXPE

1 AND 1.5 MM

WEAR LAYER

0.3 AND 0.5 MM

SIZE

180 X 1220 MM
228.6 X 1219.2 MM
228.6 X 1524 MM

FINISH

EMBOSSSED MATT

INSTALLATION METHOD

UNILIN UNICLIC



SCAN AND SEE THE
LIVE PHOTOS



IMAGES ARE FOR REPRESENTATION PURPOSE ONLY AND ACTUAL PRODUCT MAY VARY

QSW-427



HICKORY WOOD

THICKNESS

5 to 7.5 MM

IXPE

1 AND 1.5 MM

WEAR LAYER

0.3 AND 0.5 MM

SIZE

180 X 1220 MM
228.6 X 1219.2 MM
228.6 X 1524 MM

FINISH

EMBOSSED MATT

INSTALLATION METHOD

UNILIN UNICLIC



SCAN AND SEE THE
LIVE PHOTOS



IMAGES ARE FOR REPRESENTATION PURPOSE ONLY AND ACTUAL PRODUCT MAY VARY

QSW-428



MAPLE WOOD WHITE

THICKNESS

5 to 7.5 MM

IXPE

1 AND 1.5 MM

WEAR LAYER

0.3 AND 0.5 MM

SIZE

180 X 1220 MM
228.6 X 1219.2 MM
228.6 X 1524 MM

FINISH

EMBOSSSED MATT

INSTALLATION METHOD

UNILIN UNICLIC



SCAN AND SEE THE
LIVE PHOTOS



IMAGES ARE FOR REPRESENTATION PURPOSE ONLY AND ACTUAL PRODUCT MAY VARY

QSW-429



SLATE GREY

THICKNESS

5 to 7.5 MM

IXPE

1 AND 1.5 MM

WEAR LAYER

0.3 AND 0.5 MM

SIZE

180 X 1220 MM
228.6 X 1219.2 MM
228.6 X 1524 MM

FINISH

EMBOSSSED MATT

INSTALLATION METHOD

UNILIN UNICLIC



SCAN AND SEE THE
LIVE PHOTOS



IMAGES ARE FOR REPRESENTATION PURPOSE ONLY AND ACTUAL PRODUCT MAY VARY

QSW-430



GREYWOOD

THICKNESS

5 to 7.5 MM

IXPE

1 AND 1.5 MM

WEAR LAYER

0.3 AND 0.5 MM

SIZE

180 X 1220 MM
228.6 X 1219.2 MM
228.6 X 1524 MM

FINISH

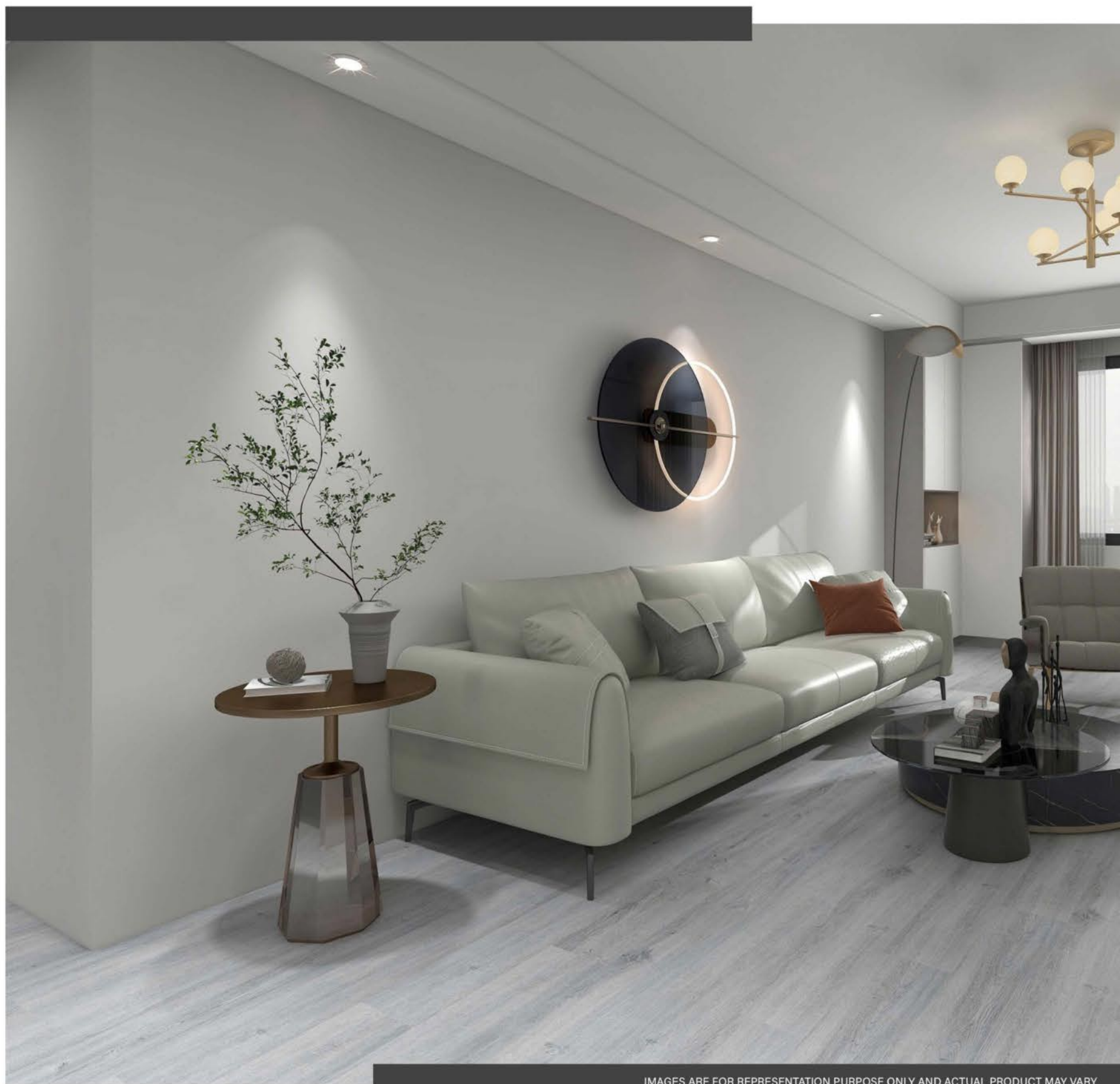
EMBOSSSED MATT

INSTALLATION METHOD

UNILIN UNICLIC



SCAN AND SEE THE
LIVE PHOTOS



IMAGES ARE FOR REPRESENTATION PURPOSE ONLY AND ACTUAL PRODUCT MAY VARY

QSW-431



DARK WALNUT

THICKNESS

5 to 7.5 MM

IXPE

1 AND 1.5 MM

WEAR LAYER

0.3 AND 0.5 MM

SIZE

180 X 1220 MM
228.6 X 1219.2 MM
228.6 X 1524 MM

FINISH

EMBOSSED MATT

INSTALLATION METHOD

UNILIN UNICLIC



SCAN AND SEE THE
LIVE PHOTOS



IMAGES ARE FOR REPRESENTATION PURPOSE ONLY AND ACTUAL PRODUCT MAY VARY

QSW-432



CREAM BONE

THICKNESS

5 to 7.5 MM

IXPE

1 AND 1.5 MM

WEAR LAYER

0.3 AND 0.5 MM

SIZE

180 X 1220 MM
228.6 X 1219.2 MM
228.6 X 1524 MM

FINISH

EMBOSSED MATT

INSTALLATION METHOD

UNILIN UNICLIC



SCAN AND SEE THE
LIVE PHOTOS



QSW-433



TRES NATURALE

THICKNESS

5 to 7.5 MM

IXPE

1 AND 1.5 MM

WEAR LAYER

0.3 AND 0.5 MM

SIZE

180 X 1220 MM
228.6 X 1219.2 MM
228.6 X 1524 MM

FINISH

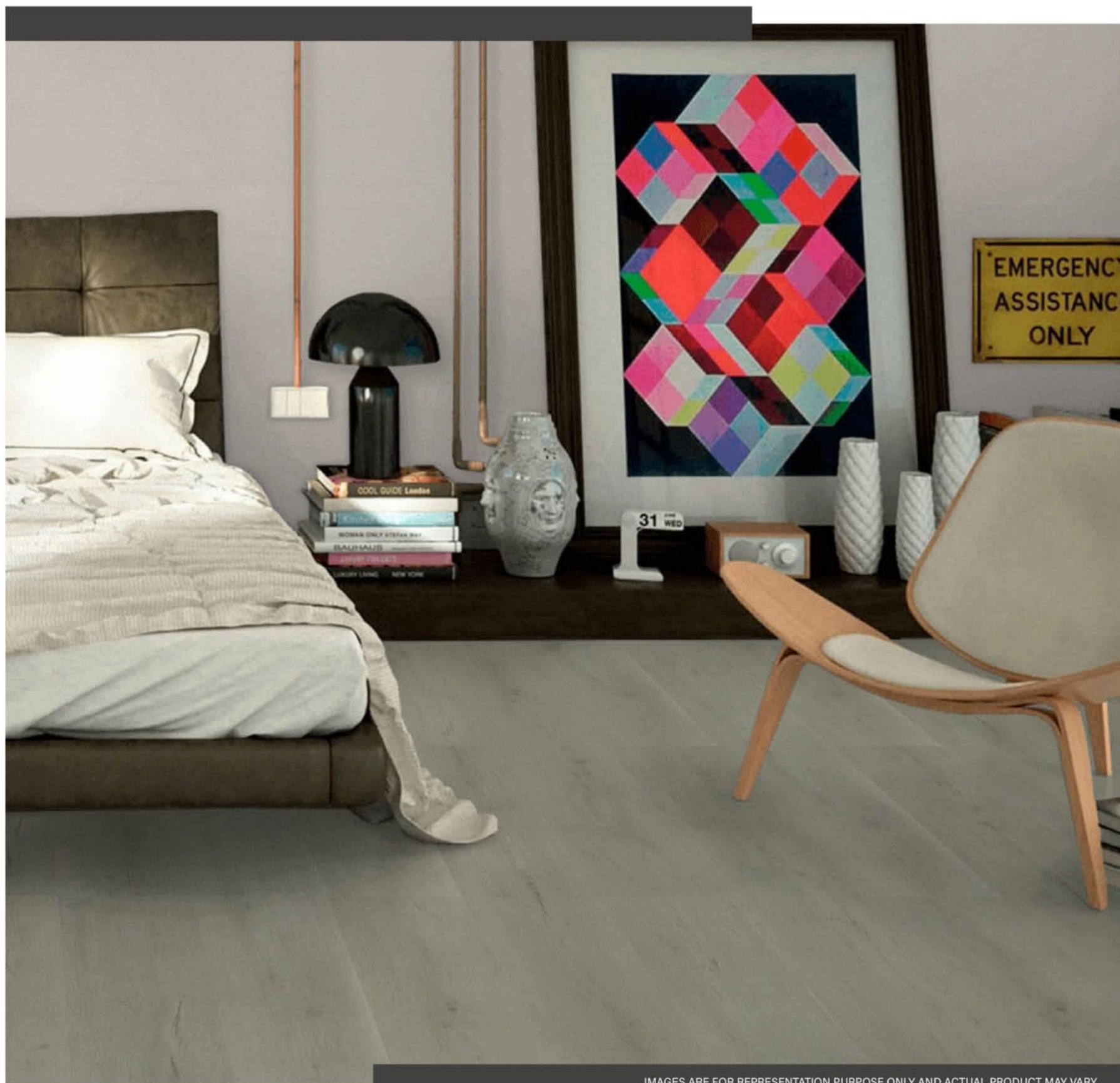
EMBOSSED MATT

INSTALLATION METHOD

UNILIN UNICLIC



SCAN AND SEE THE
LIVE PHOTOS



IMAGES ARE FOR REPRESENTATION PURPOSE ONLY AND ACTUAL PRODUCT MAY VARY

QSW-434



EBONY WOOD

THICKNESS

5 to 7.5 MM

IXPE

1 AND 1.5 MM

WEAR LAYER

0.3 AND 0.5 MM

SIZE

180 X 1220 MM
228.6 X 1219.2 MM
228.6 X 1524 MM

FINISH

EMBOSSSED MATT

INSTALLATION METHOD

UNILIN UNICLIC



SCAN AND SEE THE
LIVE PHOTOS



IMAGES ARE FOR REPRESENTATION PURPOSE ONLY AND ACTUAL PRODUCT MAY VARY

QSW-435



OAK WOOD GREY

THICKNESS

5 to 7.5 MM

IXPE

1 AND 1.5 MM

WEAR LAYER

0.3 AND 0.5 MM

SIZE

180 X 1220 MM
228.6 X 1219.2 MM
228.6 X 1524 MM

FINISH

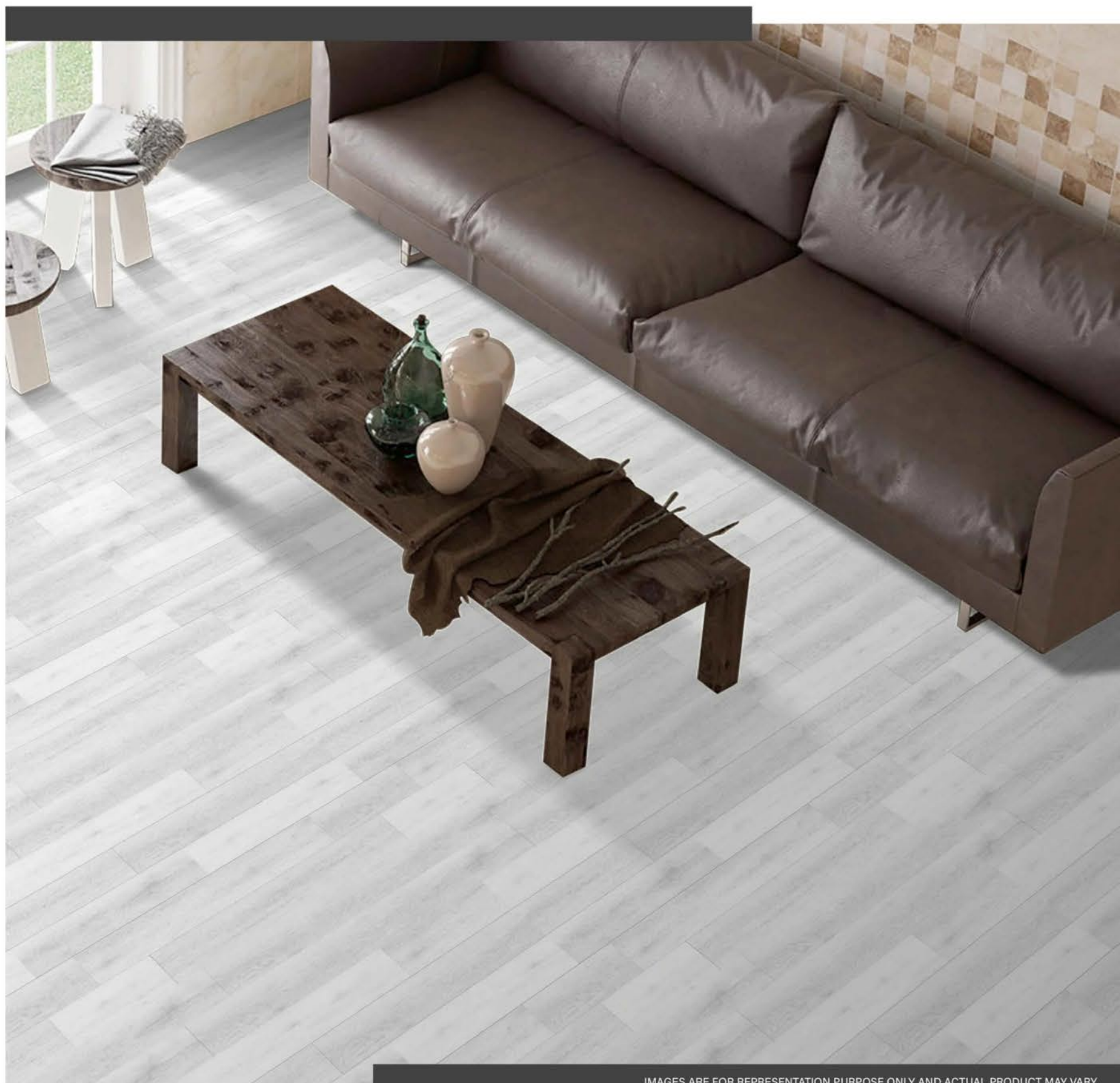
EMBOSSSED MATT

INSTALLATION METHOD

UNILIN UNICLIC



SCAN AND SEE THE
LIVE PHOTOS



IMAGES ARE FOR REPRESENTATION PURPOSE ONLY AND ACTUAL PRODUCT MAY VARY

QSW-436



ANTIQUE PINE

THICKNESS

5 to 7.5 MM

IXPE

1 AND 1.5 MM

WEAR LAYER

0.3 AND 0.5 MM

SIZE

180 X 1220 MM
228.6 X 1219.2 MM
228.6 X 1524 MM

FINISH

EMBOSSED MATT

INSTALLATION METHOD

UNILIN UNICLIC



SCAN AND SEE THE
LIVE PHOTOS



IMAGES ARE FOR REPRESENTATION PURPOSE ONLY AND ACTUAL PRODUCT MAY VARY

QSW-437



PACIFIC PEARL

THICKNESS

5 to 7.5 MM

IXPE

1 AND 1.5 MM

WEAR LAYER

0.3 AND 0.5 MM

SIZE

180 X 1220 MM
228.6 X 1219.2 MM
228.6 X 1524 MM

FINISH

EMBOSSED MATT

INSTALLATION METHOD

UNILIN UNICLIC



SCAN AND SEE THE
LIVE PHOTOS



IMAGES ARE FOR REPRESENTATION PURPOSE ONLY AND ACTUAL PRODUCT MAY VARY

QSW-438



MAHOGANY WOOD

THICKNESS

5 to 7.5 MM

IXPE

1 AND 1.5 MM

WEAR LAYER

0.3 AND 0.5 MM

SIZE

180 X 1220 MM
228.6 X 1219.2 MM
228.6 X 1524 MM

FINISH

EMBOSSED MATT

INSTALLATION METHOD

UNILIN UNICLIC



SCAN AND SEE THE
LIVE PHOTOS



IMAGES ARE FOR REPRESENTATION PURPOSE ONLY AND ACTUAL PRODUCT MAY VARY

QSW-439



CARBON GREY

THICKNESS

5 to 7.5 MM

IXPE

1 AND 1.5 MM

WEAR LAYER

0.3 AND 0.5 MM

SIZE

180 X 1220 MM
228.6 X 1219.2 MM
228.6 X 1524 MM

FINISH

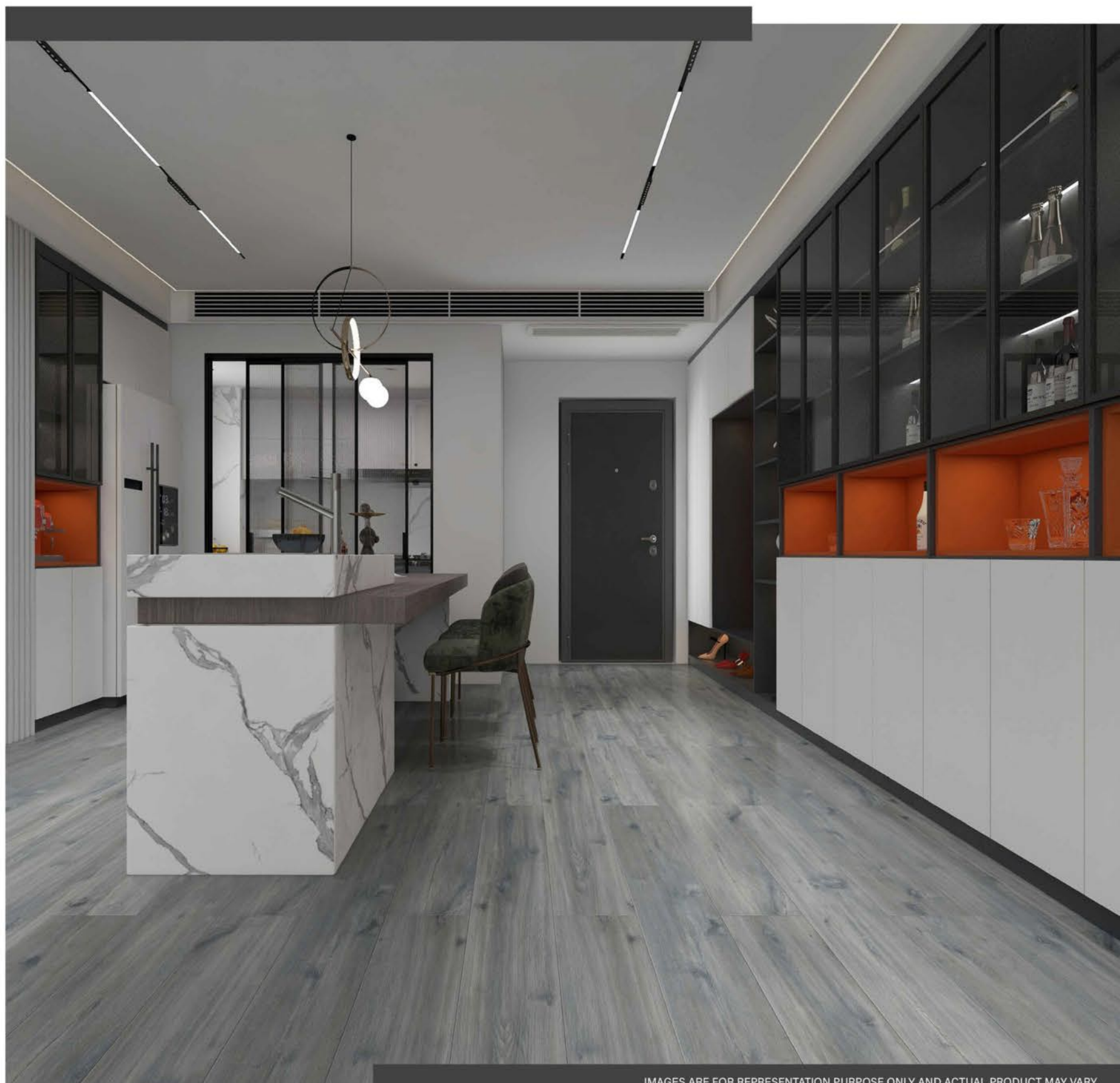
EMBOSSSED MATT

INSTALLATION METHOD

UNILIN UNICLIC



SCAN AND SEE THE
LIVE PHOTOS



IMAGES ARE FOR REPRESENTATION PURPOSE ONLY AND ACTUAL PRODUCT MAY VARY

QSW-440



CARAMEL BROWN

THICKNESS

5 to 7.5 MM

IXPE

1 AND 1.5 MM

WEAR LAYER

0.3 AND 0.5 MM

SIZE

180 X 1220 MM
228.6 X 1219.2 MM
228.6 X 1524 MM

FINISH

EMBOSSED MATT

INSTALLATION METHOD

UNILIN UNICLIC



SCAN AND SEE THE
LIVE PHOTOS



IMAGES ARE FOR REPRESENTATION PURPOSE ONLY AND ACTUAL PRODUCT MAY VARY

QSW-441



CHESTNUT CHERRY

THICKNESS

5 to 7.5 MM

IXPE

1 AND 1.5 MM

WEAR LAYER

0.3 AND 0.5 MM

SIZE

180 X 1220 MM
228.6 X 1219.2 MM
228.6 X 1524 MM

FINISH

EMBOSSSED MATT

INSTALLATION METHOD

UNILIN UNICLIC



SCAN AND SEE THE
LIVE PHOTOS



IMAGES ARE FOR REPRESENTATION PURPOSE ONLY AND ACTUAL PRODUCT MAY VARY

QSW-442



BRUNETTE WOOD

THICKNESS

5 to 7.5 MM

IXPE

1 AND 1.5 MM

WEAR LAYER

0.3 AND 0.5 MM

SIZE

180 X 1220 MM
228.6 X 1219.2 MM
228.6 X 1524 MM

FINISH

EMBOSSED MATT

INSTALLATION METHOD

UNILIN UNICLIC



SCAN AND SEE THE
LIVE PHOTOS



IMAGES ARE FOR REPRESENTATION PURPOSE ONLY AND ACTUAL PRODUCT MAY VARY

QSW-443



HONEY WOOD

THICKNESS

5 to 7.5 MM

IXPE

1 AND 1.5 MM

WEAR LAYER

0.3 AND 0.5 MM

SIZE

180 X 1220 MM
228.6 X 1219.2 MM
228.6 X 1524 MM

FINISH

EMBOSSED MATT

INSTALLATION METHOD

UNILIN UNICLIC



SCAN AND SEE THE
LIVE PHOTOS



IMAGES ARE FOR REPRESENTATION PURPOSE ONLY AND ACTUAL PRODUCT MAY VARY

QSW-446



GLAMWOOD BEIGE

THICKNESS

5 to 7.5 MM

IXPE

1 AND 1.5 MM

WEAR LAYER

0.3 AND 0.5 MM

SIZE

180 X 1220 MM
228.6 X 1219.2 MM
228.6 X 1524 MM

FINISH

EMBOSSED MATT

INSTALLATION METHOD

UNILIN UNICLIC



SCAN AND SEE THE
LIVE PHOTOS



IMAGES ARE FOR REPRESENTATION PURPOSE ONLY AND ACTUAL PRODUCT MAY VARY

QSW-447



LEGACY OAKWOOD

THICKNESS

5 to 7.5 MM

IXPE

1 AND 1.5 MM

WEAR LAYER

0.3 AND 0.5 MM

SIZE

180 X 1220 MM
228.6 X 1219.2 MM
228.6 X 1524 MM

FINISH

EMBOSSED MATT

INSTALLATION METHOD

UNILIN UNICLIC



SCAN AND SEE THE
LIVE PHOTOS



IMAGES ARE FOR REPRESENTATION PURPOSE ONLY AND ACTUAL PRODUCT MAY VARY

QSW-448



SANCTUARY OAKWOOD

THICKNESS

5 to 7.5 MM

IXPE

1 AND 1.5 MM

WEAR LAYER

0.3 AND 0.5 MM

SIZE

180 X 1220 MM
228.6 X 1219.2 MM
228.6 X 1524 MM

FINISH

EMBOSSED MATT

INSTALLATION METHOD

UNILIN UNICLIC



SCAN AND SEE THE
LIVE PHOTOS



IMAGES ARE FOR REPRESENTATION PURPOSE ONLY AND ACTUAL PRODUCT MAY VARY

QSW-449



NOBLE OAKWOOD

THICKNESS

5 to 7.5 MM

IXPE

1 AND 1.5 MM

WEAR LAYER

0.3 AND 0.5 MM

SIZE

180 X 1220 MM
228.6 X 1219.2 MM
228.6 X 1524 MM

FINISH

EMBOSSED MATT

INSTALLATION METHOD

UNILIN UNICLIC



SCAN AND SEE THE
LIVE PHOTOS



IMAGES ARE FOR REPRESENTATION PURPOSE ONLY AND ACTUAL PRODUCT MAY VARY

QSW-450



VINTAGE OAKWOOD

THICKNESS

5 to 7.5 MM

IXPE

1 AND 1.5 MM

WEAR LAYER

0.3 AND 0.5 MM

SIZE

180 X 1220 MM
228.6 X 1219.2 MM
228.6 X 1524 MM

FINISH

EMBOSSED MATT

INSTALLATION METHOD

UNILIN UNICLIC



SCAN AND SEE THE
LIVE PHOTOS



IMAGES ARE FOR REPRESENTATION PURPOSE ONLY AND ACTUAL PRODUCT MAY VARY

QSW-451



ECOWOOD NATURAL

THICKNESS

5 to 7.5 MM

IXPE

1 AND 1.5 MM

WEAR LAYER

0.3 AND 0.5 MM

SIZE

180 X 1220 MM
228.6 X 1219.2 MM
228.6 X 1524 MM

FINISH

EMBOSSED MATT

INSTALLATION METHOD

UNILIN UNICLIC



SCAN AND SEE THE
LIVE PHOTOS



IMAGES ARE FOR REPRESENTATION PURPOSE ONLY AND ACTUAL PRODUCT MAY VARY

QSW-452



ASPEN BEIGE

THICKNESS

5 to 7.5 MM

IXPE

1 AND 1.5 MM

WEAR LAYER

0.3 AND 0.5 MM

SIZE

180 X 1220 MM
228.6 X 1219.2 MM
228.6 X 1524 MM

FINISH

EMBOSSED MATT

INSTALLATION METHOD

UNILIN UNICLIC



SCAN AND SEE THE
LIVE PHOTOS



IMAGES ARE FOR REPRESENTATION PURPOSE ONLY AND ACTUAL PRODUCT MAY VARY

QSW-453



MADISON NATURAL

THICKNESS

5 to 7.5 MM

IXPE

1 AND 1.5 MM

WEAR LAYER

0.3 AND 0.5 MM

SIZE

180 X 1220 MM
228.6 X 1219.2 MM
228.6 X 1524 MM

FINISH

EMBOSSSED MATT

INSTALLATION METHOD

UNILIN UNICLIC



SCAN AND SEE THE
LIVE PHOTOS



IMAGES ARE FOR REPRESENTATION PURPOSE ONLY AND ACTUAL PRODUCT MAY VARY

QSW-454



NELSON NATURAL

THICKNESS

5 to 7.5 MM

IXPE

1 AND 1.5 MM

WEAR LAYER

0.3 AND 0.5 MM

SIZE

180 X 1220 MM
228.6 X 1219.2 MM
228.6 X 1524 MM

FINISH

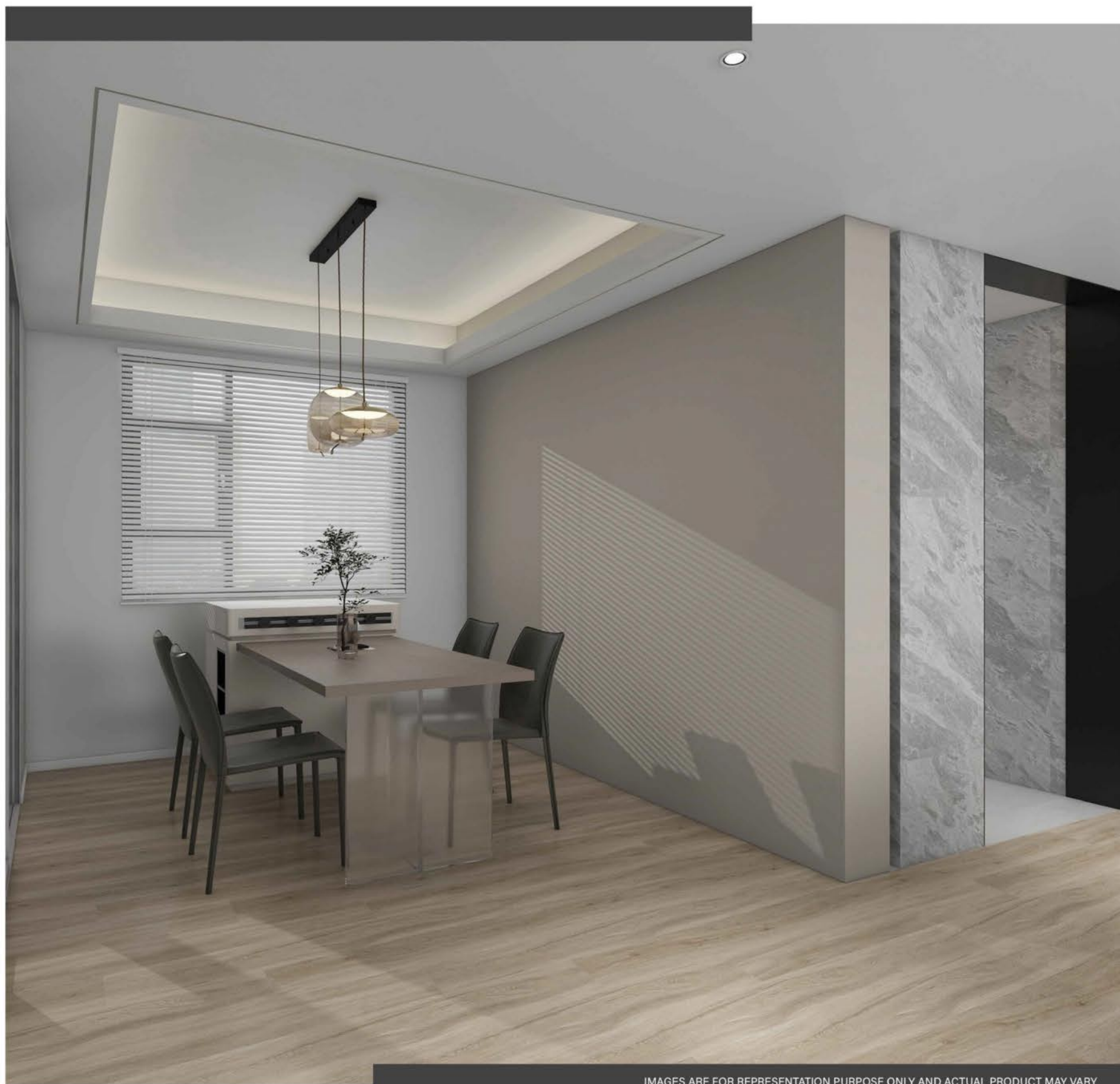
EMBOSSED MATT

INSTALLATION METHOD

UNILIN UNICLIC



SCAN AND SEE THE
LIVE PHOTOS



IMAGES ARE FOR REPRESENTATION PURPOSE ONLY AND ACTUAL PRODUCT MAY VARY

QSW-455



KENT WOOD GREY

THICKNESS

5 to 7.5 MM

IXPE

1 AND 1.5 MM

WEAR LAYER

0.3 AND 0.5 MM

SIZE

180 X 1220 MM
228.6 X 1219.2 MM
228.6 X 1524 MM

FINISH

EMBOSSED MATT

INSTALLATION METHOD

UNILIN UNICLIC



SCAN AND SEE THE
LIVE PHOTOS



IMAGES ARE FOR REPRESENTATION PURPOSE ONLY AND ACTUAL PRODUCT MAY VARY

QSW-456



IMPERIAL WOOD GREY

THICKNESS

5 to 7.5 MM

IXPE

1 AND 1.5 MM

WEAR LAYER

0.3 AND 0.5 MM

SIZE

180 X 1220 MM
228.6 X 1219.2 MM
228.6 X 1524 MM

FINISH

EMBOSSED MATT

INSTALLATION METHOD

UNILIN UNICLIC



SCAN AND SEE THE
LIVE PHOTOS



IMAGES ARE FOR REPRESENTATION PURPOSE ONLY AND ACTUAL PRODUCT MAY VARY

QSW-457



VENTURA OAKWOOD

THICKNESS

5 to 7.5 MM

IXPE

1 AND 1.5 MM

WEAR LAYER

0.3 AND 0.5 MM

SIZE

180 X 1220 MM
228.6 X 1219.2 MM
228.6 X 1524 MM

FINISH

EMBOSSED MATT

INSTALLATION METHOD

UNILIN UNICLIC



SCAN AND SEE THE
LIVE PHOTOS



IMAGES ARE FOR REPRESENTATION PURPOSE ONLY AND ACTUAL PRODUCT MAY VARY

QSW-458



ROMANO OAKWOOD

THICKNESS

5 to 7.5 MM

IXPE

1 AND 1.5 MM

WEAR LAYER

0.3 AND 0.5 MM

SIZE

180 X 1220 MM
228.6 X 1219.2 MM
228.6 X 1524 MM

FINISH

EMBOSSED MATT

INSTALLATION METHOD

UNILIN UNICLIC



SCAN AND SEE THE
LIVE PHOTOS



IMAGES ARE FOR REPRESENTATION PURPOSE ONLY AND ACTUAL PRODUCT MAY VARY

QSW-459



ASTOR OAKWOOD

THICKNESS

5 to 7.5 MM

IXPE

1 AND 1.5 MM

WEAR LAYER

0.3 AND 0.5 MM

SIZE

180 X 1220 MM
228.6 X 1219.2 MM
228.6 X 1524 MM

FINISH

EMBOSSSED MATT

INSTALLATION METHOD

UNILIN UNICLIC



SCAN AND SEE THE
LIVE PHOTOS



IMAGES ARE FOR REPRESENTATION PURPOSE ONLY AND ACTUAL PRODUCT MAY VARY

QSW-460



TIMELESS OAK

THICKNESS

5 to 7.5 MM

IXPE

1 AND 1.5 MM

WEAR LAYER

0.3 AND 0.5 MM

SIZE

180 X 1220 MM
228.6 X 1219.2 MM
228.6 X 1524 MM

FINISH

EMBOSSED MATT

INSTALLATION METHOD

UNILIN UNICLIC



SCAN AND SEE THE
LIVE PHOTOS



IMAGES ARE FOR REPRESENTATION PURPOSE ONLY AND ACTUAL PRODUCT MAY VARY

QSW-461



OPAL DARKWOOD

THICKNESS

5 to 7.5 MM

IXPE

1 AND 1.5 MM

WEAR LAYER

0.3 AND 0.5 MM

SIZE

180 X 1220 MM
228.6 X 1219.2 MM
228.6 X 1524 MM

FINISH

EMBOSSSED MATT

INSTALLATION METHOD

UNILIN UNICLIC



SCAN AND SEE THE
LIVE PHOTOS



IMAGES ARE FOR REPRESENTATION PURPOSE ONLY AND ACTUAL PRODUCT MAY VARY

QSW-462



SIERRA WOOD BROWN

THICKNESS

5 to 7.5 MM

IXPE

1 AND 1.5 MM

WEAR LAYER

0.3 AND 0.5 MM

SIZE

180 X 1220 MM
228.6 X 1219.2 MM
228.6 X 1524 MM

FINISH

EMBOSSED MATT

INSTALLATION METHOD

UNILIN UNICLIC



SCAN AND SEE THE
LIVE PHOTOS



IMAGES ARE FOR REPRESENTATION PURPOSE ONLY AND ACTUAL PRODUCT MAY VARY

QSW-463



BALTIC ASH OAKWOOD

THICKNESS

5 to 7.5 MM

IXPE

1 AND 1.5 MM

WEAR LAYER

0.3 AND 0.5 MM

SIZE

180 X 1220 MM
228.6 X 1219.2 MM
228.6 X 1524 MM

FINISH

EMBOSSSED MATT

INSTALLATION METHOD

UNILIN UNICLIC



SCAN AND SEE THE
LIVE PHOTOS



IMAGES ARE FOR REPRESENTATION PURPOSE ONLY AND ACTUAL PRODUCT MAY VARY

QSW-464



FRENCH OAKWOOD

THICKNESS

5 to 7.5 MM

IXPE

1 AND 1.5 MM

WEAR LAYER

0.3 AND 0.5 MM

SIZE

180 X 1220 MM
228.6 X 1219.2 MM
228.6 X 1524 MM

FINISH

EMBOSSED MATT

INSTALLATION METHOD

UNILIN UNICLIC



IMAGES ARE FOR REPRESENTATION PURPOSE ONLY AND ACTUAL PRODUCT MAY VARY

QSW-465



GLACIER OAKWOOD

THICKNESS

5 to 7.5 MM

IXPE

1 AND 1.5 MM

WEAR LAYER

0.3 AND 0.5 MM

SIZE

180 X 1220 MM
228.6 X 1219.2 MM
228.6 X 1524 MM

FINISH

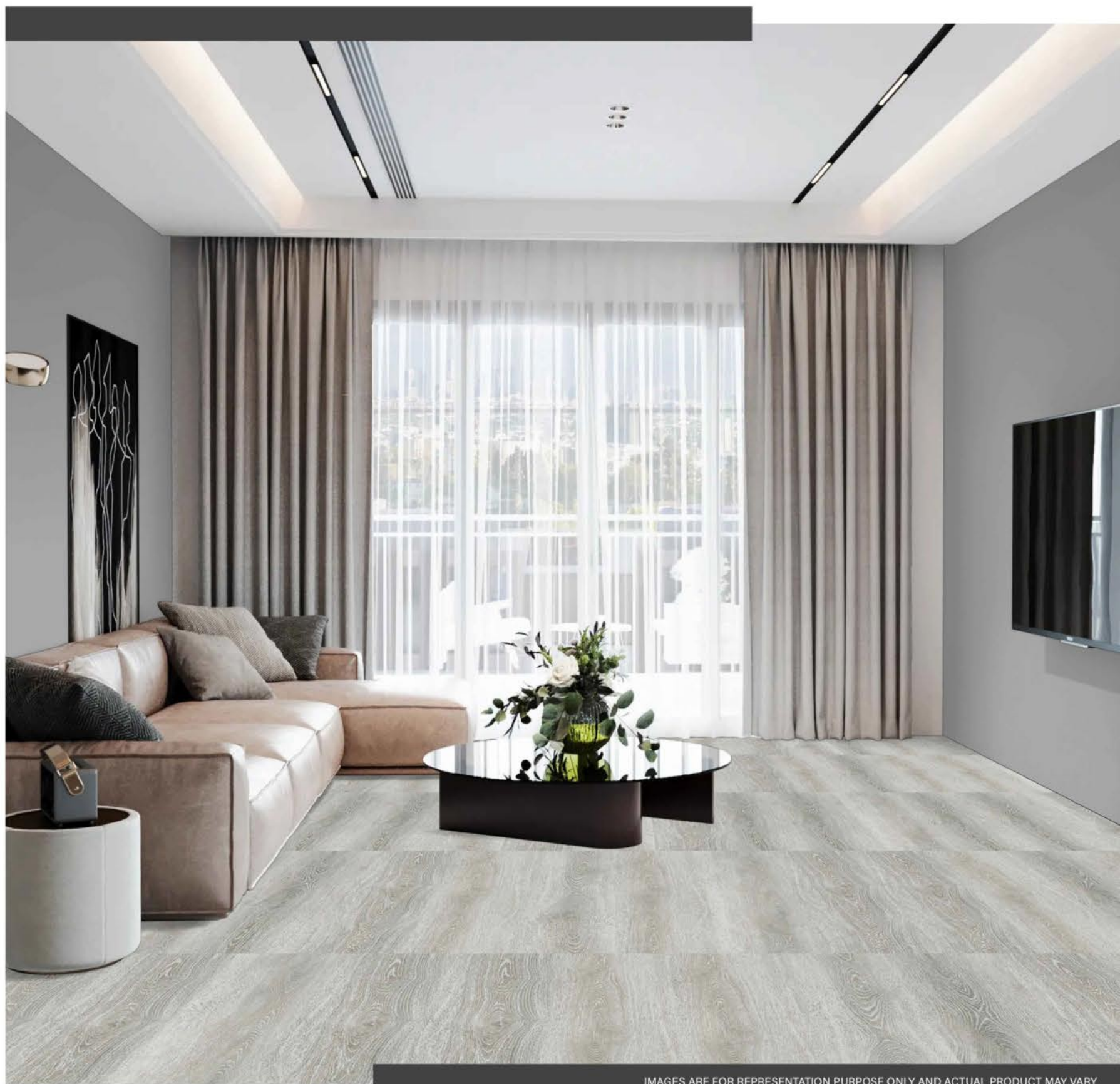
EMBOSSED MATT

INSTALLATION METHOD

UNILIN UNICLIC



SCAN AND SEE THE
LIVE PHOTOS



IMAGES ARE FOR REPRESENTATION PURPOSE ONLY AND ACTUAL PRODUCT MAY VARY

QSW-466



ARGON WOOD DARK

THICKNESS

5 to 7.5 MM

IXPE

1 AND 1.5 MM

WEAR LAYER

0.3 AND 0.5 MM

SIZE

180 X 1220 MM
228.6 X 1219.2 MM
228.6 X 1524 MM

FINISH

EMBOSSSED MATT

INSTALLATION METHOD

UNILIN UNICLIC



SCAN AND SEE THE
LIVE PHOTOS



IMAGES ARE FOR REPRESENTATION PURPOSE ONLY AND ACTUAL PRODUCT MAY VARY

QSW-467



CANADIAN OAKWOOD

THICKNESS

5 to 7.5 MM

IXPE

1 AND 1.5 MM

WEAR LAYER

0.3 AND 0.5 MM

SIZE

180 X 1220 MM
228.6 X 1219.2 MM
228.6 X 1524 MM

FINISH

EMBOSSED MATT

INSTALLATION METHOD

UNILIN UNICLIC



SCAN AND SEE THE
LIVE PHOTOS



IMAGES ARE FOR REPRESENTATION PURPOSE ONLY AND ACTUAL PRODUCT MAY VARY

QSW-468



SILVER PINWOOD

THICKNESS

5 to 7.5 MM

IXPE

1 AND 1.5 MM

WEAR LAYER

0.3 AND 0.5 MM

SIZE

180 X 1220 MM
228.6 X 1219.2 MM
228.6 X 1524 MM

FINISH

EMBOSSED MATT

INSTALLATION METHOD

UNILIN UNICLIC



SCAN AND SEE THE
LIVE PHOTOS



IMAGES ARE FOR REPRESENTATION PURPOSE ONLY AND ACTUAL PRODUCT MAY VARY

QSW-469



CHAMPAGNE OAKWOOD

THICKNESS

5 to 7.5 MM

IXPE

1 AND 1.5 MM

WEAR LAYER

0.3 AND 0.5 MM

SIZE

180 X 1220 MM
228.6 X 1219.2 MM
228.6 X 1524 MM

FINISH

EMBOSSSED MATT

INSTALLATION METHOD

UNILIN UNICLIC



SCAN AND SEE THE
LIVE PHOTOS



IMAGES ARE FOR REPRESENTATION PURPOSE ONLY AND ACTUAL PRODUCT MAY VARY

QSW-470



STERLING NERO WOOD

THICKNESS

5 to 7.5 MM

IXPE

1 AND 1.5 MM

WEAR LAYER

0.3 AND 0.5 MM

SIZE

180 X 1220 MM
228.6 X 1219.2 MM
228.6 X 1524 MM

FINISH

EMBOSSED MATT

INSTALLATION METHOD

UNILIN UNICLIC



SCAN AND SEE THE
LIVE PHOTOS



IMAGES ARE FOR REPRESENTATION PURPOSE ONLY AND ACTUAL PRODUCT MAY VARY

QSW-471



CHERRY MERLOT

THICKNESS

5 to 7.5 MM

IXPE

1 AND 1.5 MM

WEAR LAYER

0.3 AND 0.5 MM

SIZE

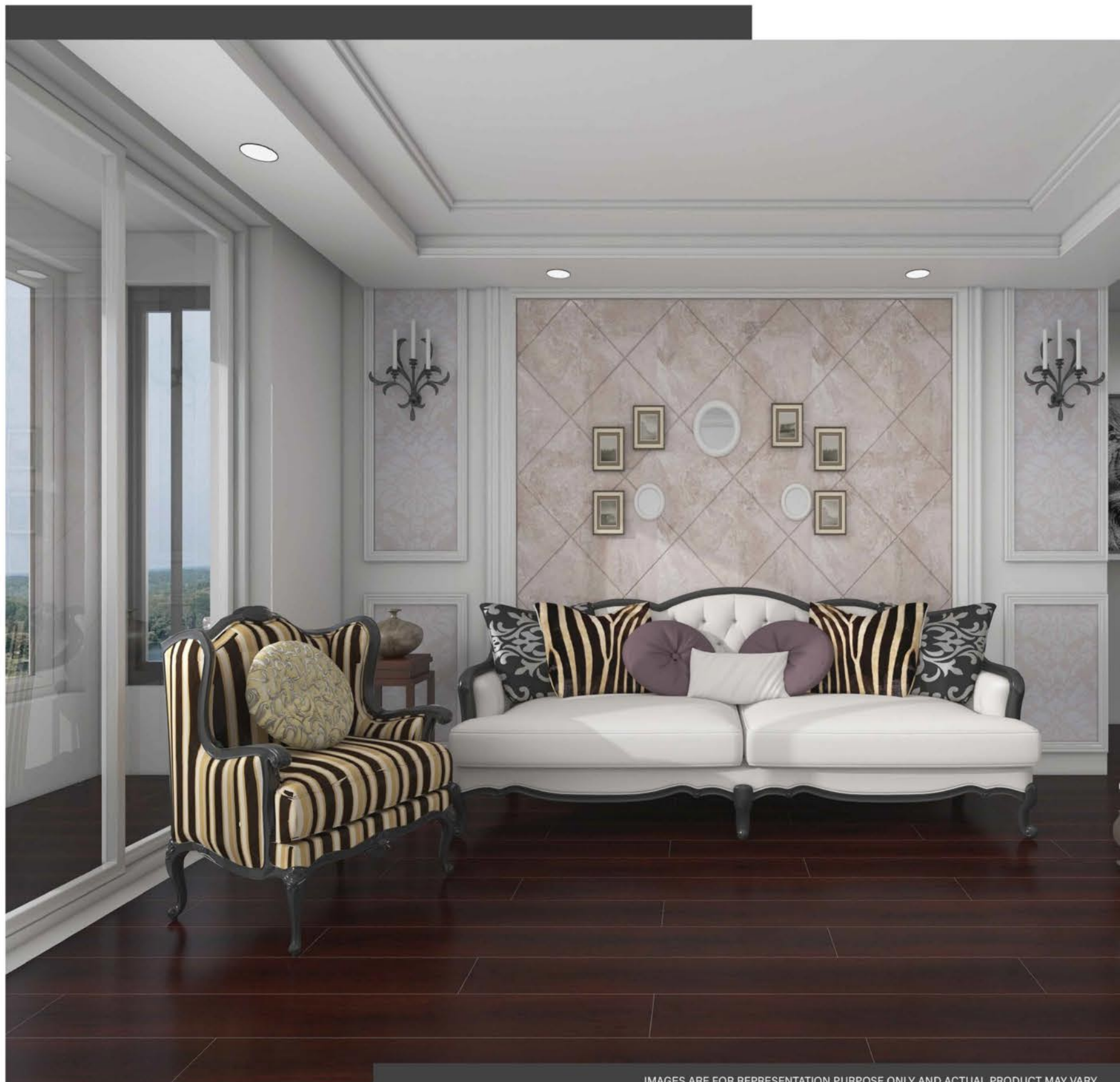
180 X 1220 MM
228.6 X 1219.2 MM
228.6 X 1524 MM

FINISH

EMBOSSED MATT

INSTALLATION METHOD

UNILIN UNICLIC



QSW-472



DRIFTWOOD HONEY

THICKNESS

5 to 7.5 MM

IXPE

1 AND 1.5 MM

WEAR LAYER

0.3 AND 0.5 MM

SIZE

180 X 1220 MM
228.6 X 1219.2 MM
228.6 X 1524 MM

FINISH

EMBOSSED MATT

INSTALLATION METHOD

UNILIN UNICLIC



QSW-473



TUSCAN COFFEE

THICKNESS

5 to 7.5 MM

IXPE

1 AND 1.5 MM

WEAR LAYER

0.3 AND 0.5 MM

SIZE

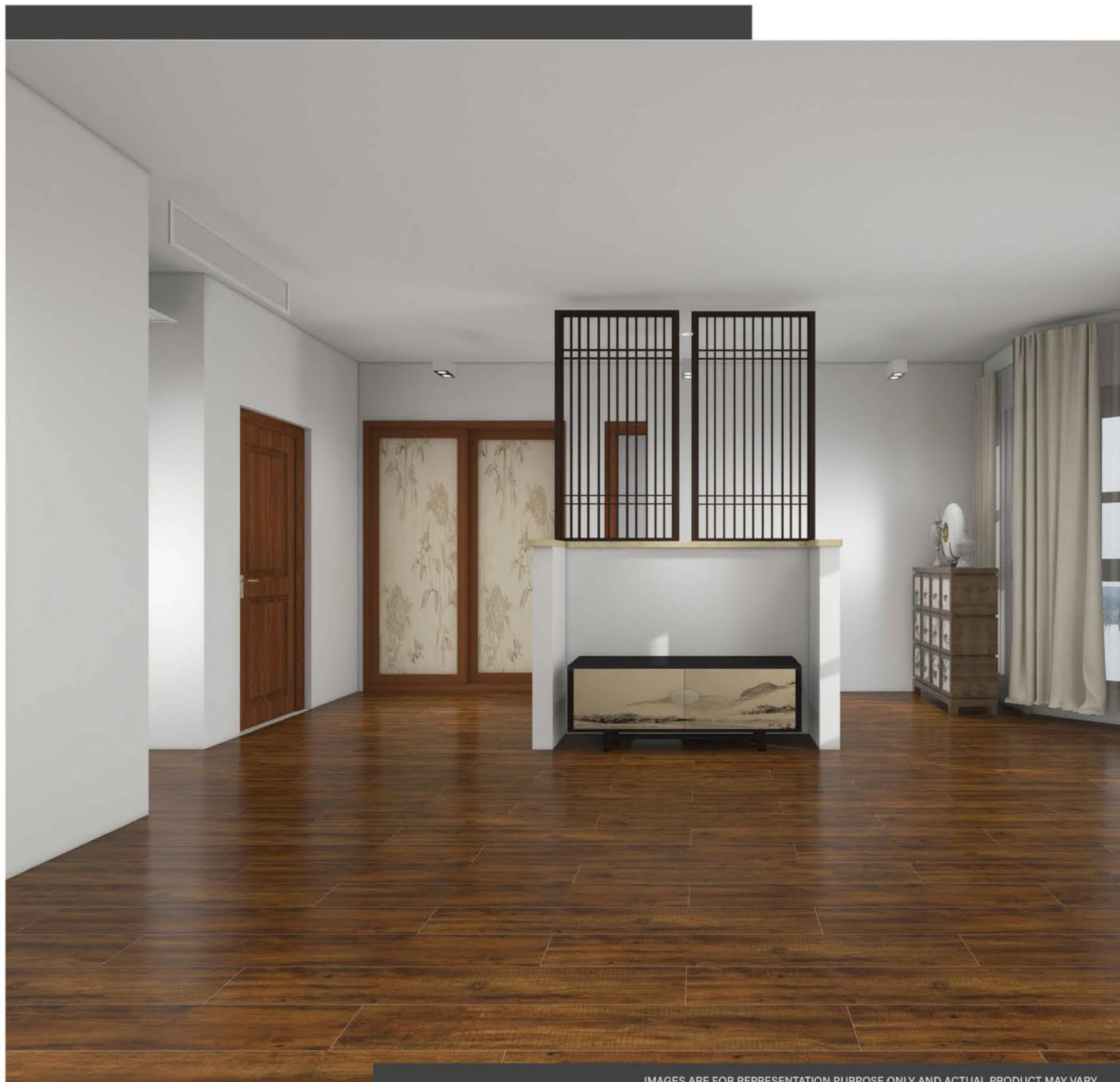
180 X 1220 MM
228.6 X 1219.2 MM
228.6 X 1524 MM

FINISH

EMBOSSED MATT

INSTALLATION METHOD

UNILIN UNICLIC



QSW-474



FURYBLACK WOOD

THICKNESS

5 to 7.5 MM

IXPE

1 AND 1.5 MM

WEAR LAYER

0.3 AND 0.5 MM

SIZE

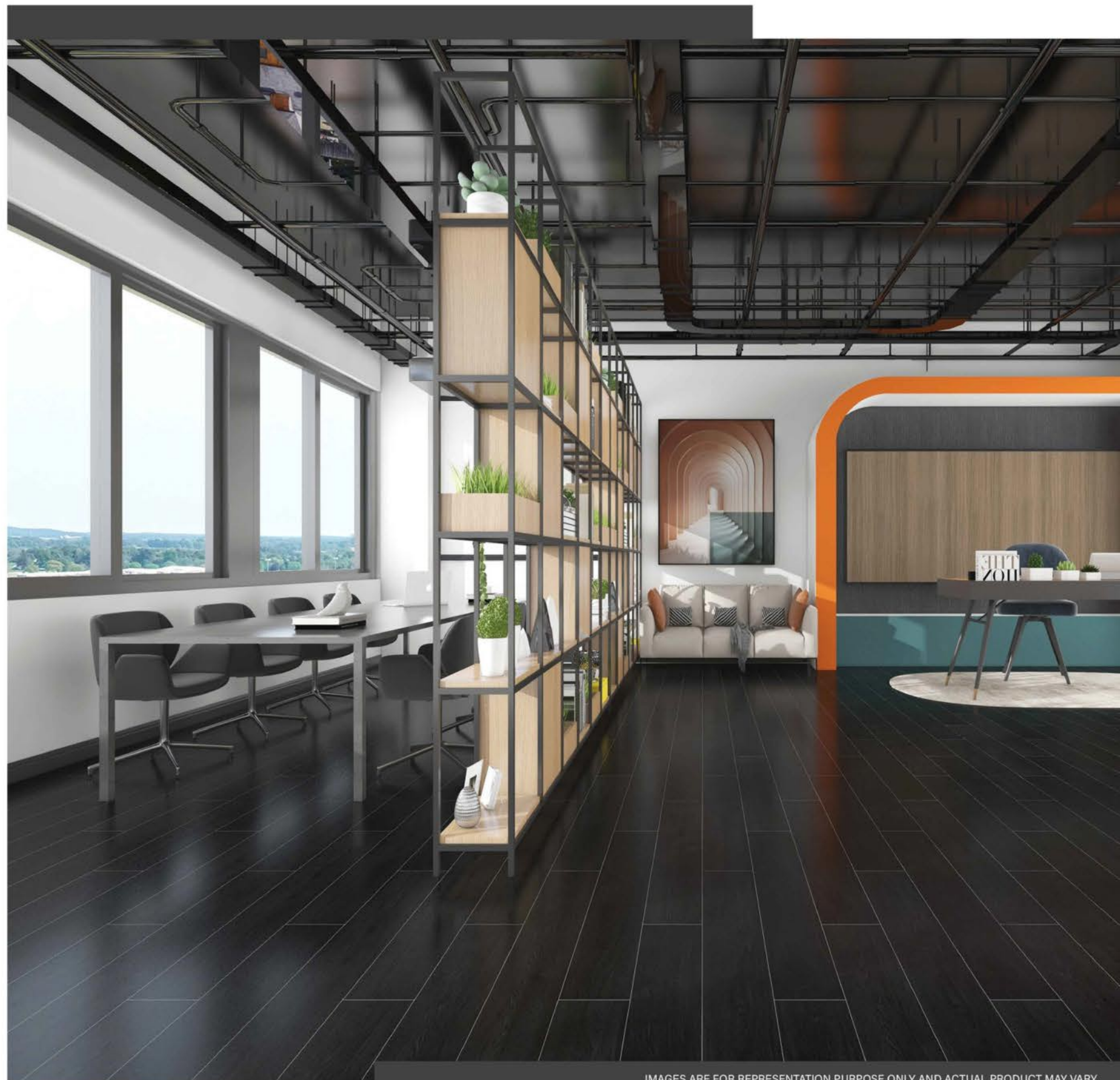
180 X 1220 MM
228.6 X 1219.2 MM
228.6 X 1524 MM

FINISH

EMBOSSSED MATT

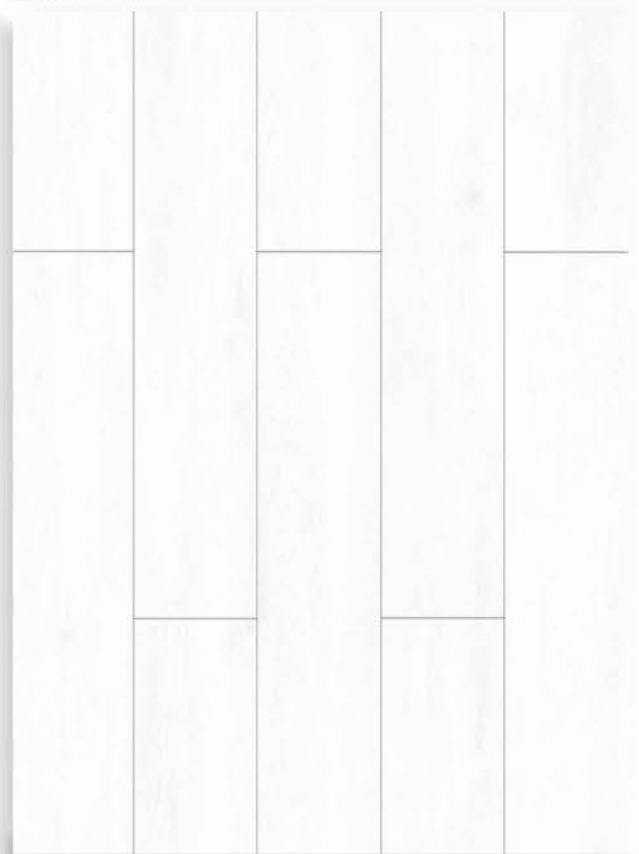
INSTALLATION METHOD

UNILIN UNICLIC



IMAGES ARE FOR REPRESENTATION PURPOSE ONLY AND ACTUAL PRODUCT MAY VARY

QSW-475



MONTBLANC

THICKNESS

5 to 7.5 MM

IXPE

1 AND 1.5 MM

WEAR LAYER

0.3 AND 0.5 MM

SIZE

180 X 1220 MM
228.6 X 1219.2 MM
228.6 X 1524 MM

FINISH

EMBOSSED MATT

INSTALLATION METHOD

UNILIN UNICLIC



QSW-444



COSMOS CARRARA

THICKNESS

6MM

IXPE

1 MM

WEAR LAYER

0.5 MM

SIZE

305 X 610 MM

FINISH

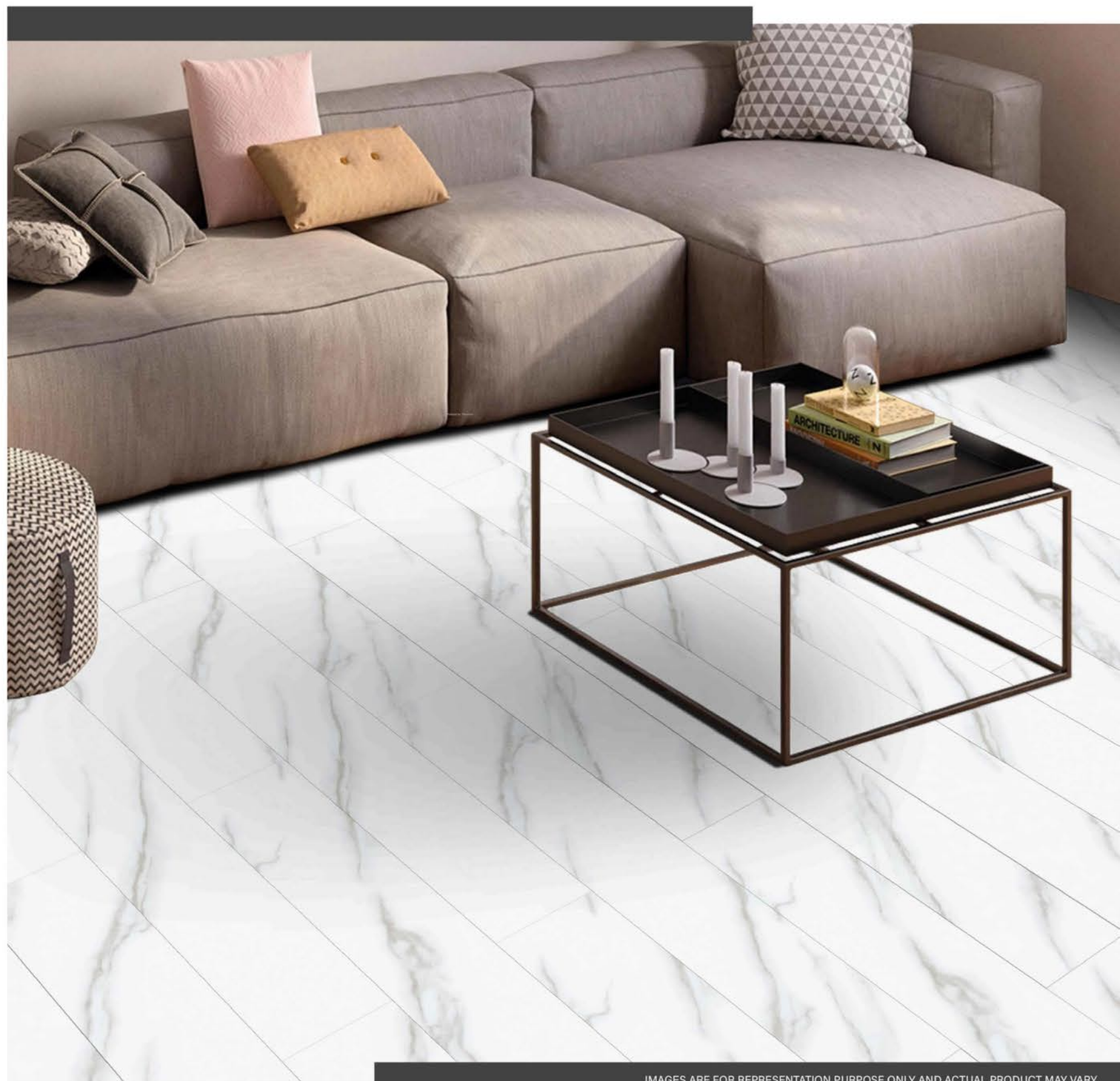
EMBOSSED MATT

INSTALLATION METHOD

UNILIN UNICLIC



SCAN AND SEE THE
LIVE PHOTOS



QSW-445



NEUTRAL GREY

THICKNESS

6MM

IXPE

1 MM

WEAR LAYER

0.5 MM

SIZE

305 X 610 MM

FINISH

EMBOSSED MATT

INSTALLATION METHOD

UNILIN UNICLIC



SCAN AND SEE THE
LIVE PHOTOS



QSW-425



DEEP CHARCOAL

THICKNESS

6MM

IXPE

1 MM

WEAR LAYER

0.5 MM

SIZE

150 X 600 MM

FINISH

EMBOSSED MATT

INSTALLATION METHOD

UNILIN UNICLIC



SCAN AND SEE THE
LIVE PHOTOS



Herringbone

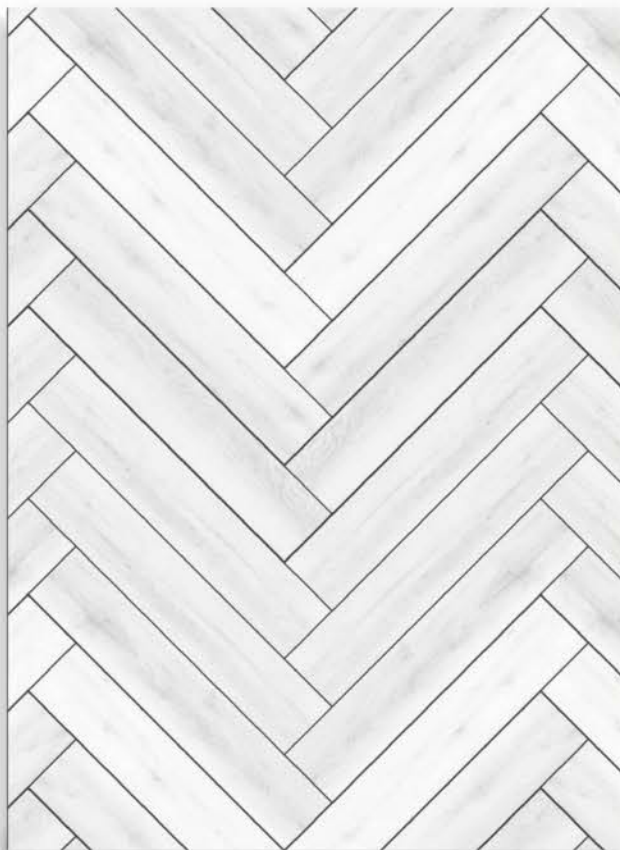


Double Herringbone



HERRINGBONE SERIES

QSW-435



OAK WOOD GREY

THICKNESS

6MM

IXPE

1 MM

WEAR LAYER

0.5 MM

SIZE

150 X 600 MM

FINISH

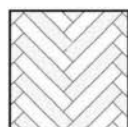
EMBOSSED MATT

INSTALLATION METHOD

UNILIN UNICLIC



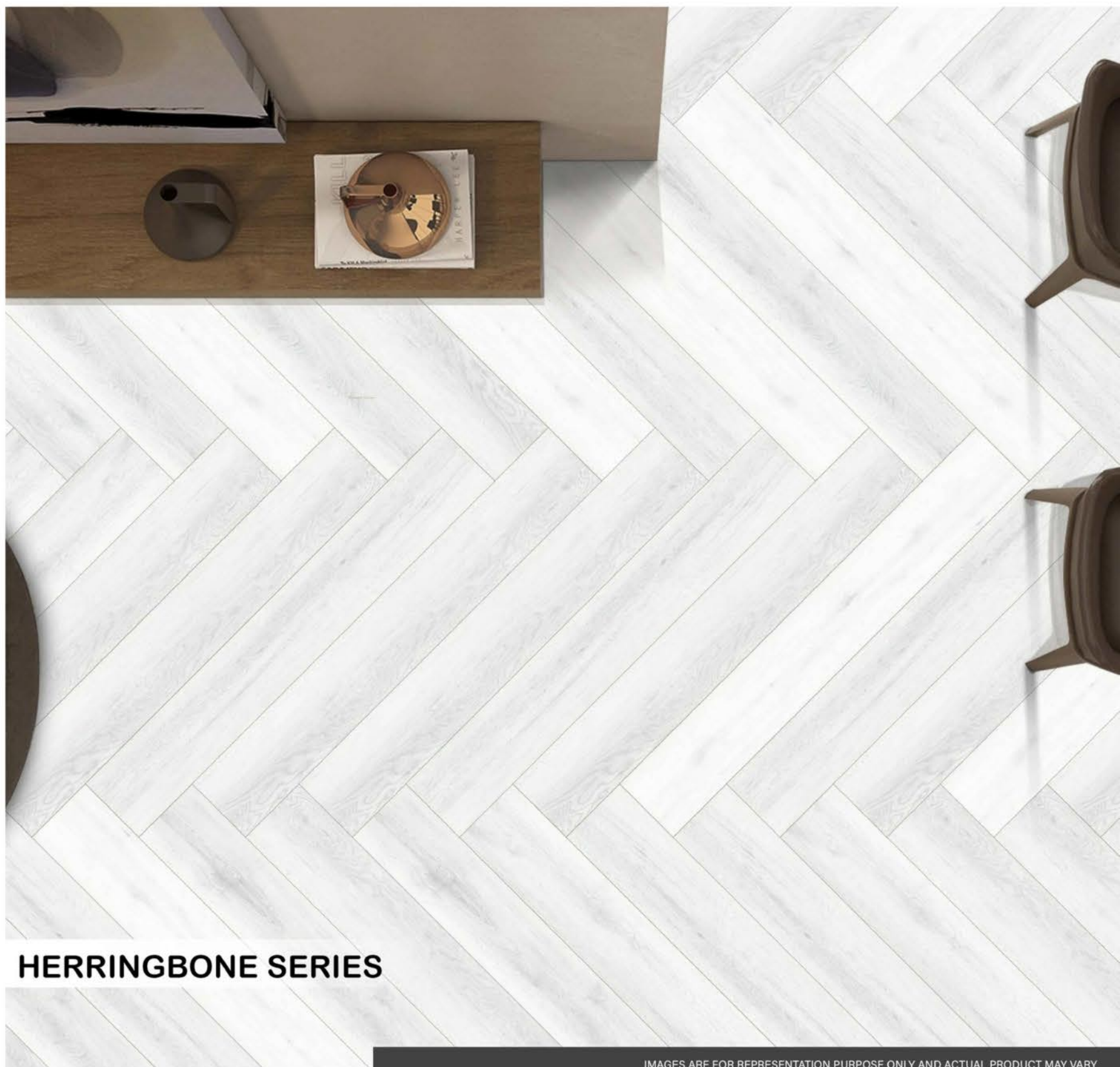
SCAN AND SEE THE
LIVE PHOTOS



Herringbone



Double Herringbone



HERRINGBONE SERIES

QSW-436



ANTIQUE PINE

THICKNESS

6MM

IXPE

1 MM

WEAR LAYER

0.5 MM

SIZE

150 X 600 MM

FINISH

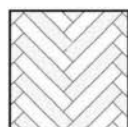
EMBOSSED MATT

INSTALLATION METHOD

UNILIN UNICLIC



SCAN AND SEE THE
LIVE PHOTOS



Herringbone



Double Herringbone



HERRINGBONE SERIES

QSW-441



CHESTNUT CHERRY

THICKNESS

6MM

IXPE

1 MM

WEAR LAYER

0.5 MM

SIZE

150 X 600 MM

FINISH

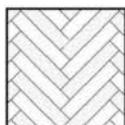
EMBOSSED MATT

INSTALLATION METHOD

UNILIN UNICLIC



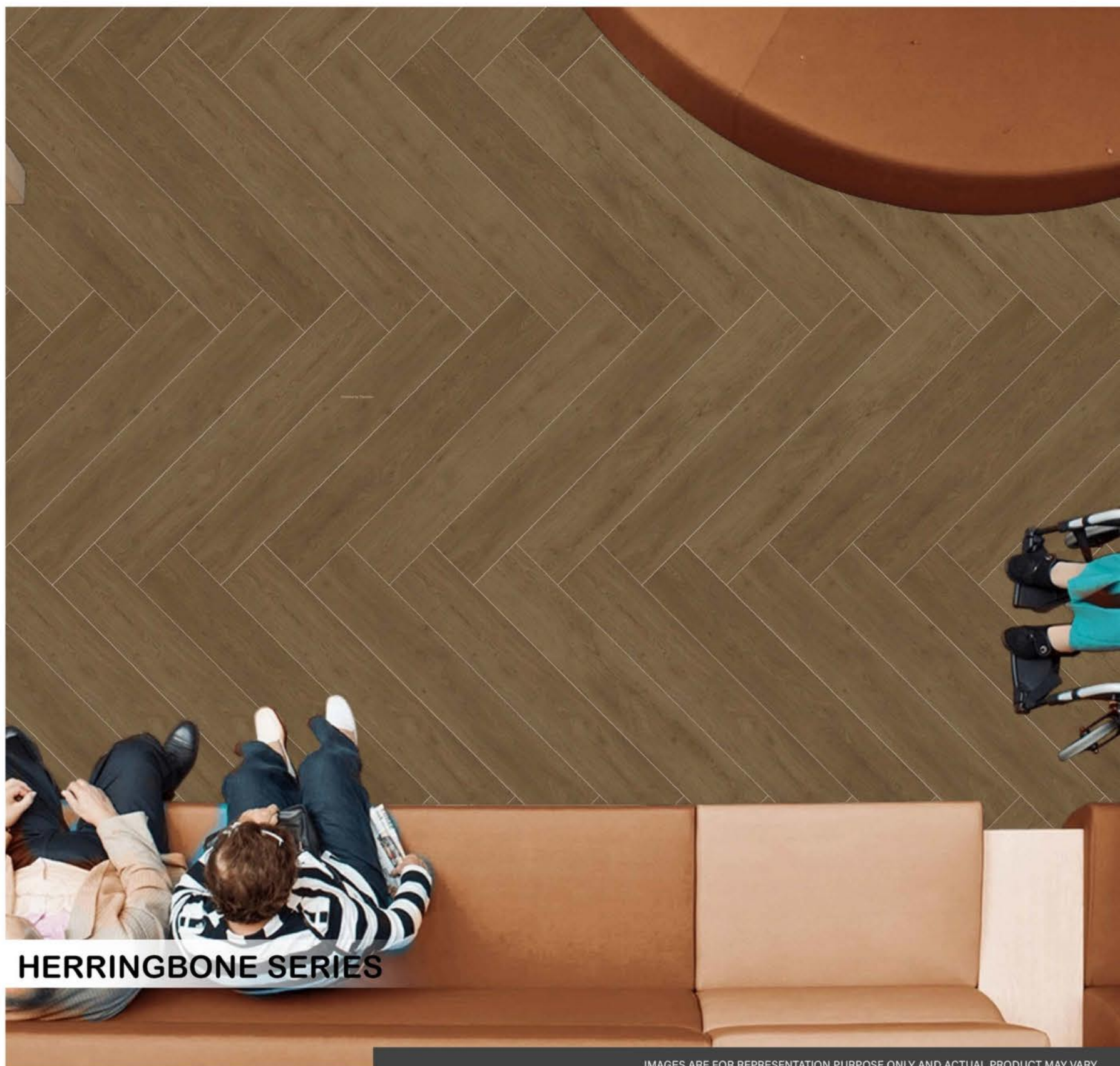
SCAN AND SEE THE
LIVE PHOTOS



Herringbone



Double Herringbone



HERRINGBONE SERIES

QSW-446



GLAMWOOD BEIGE

THICKNESS

6MM

IXPE

1 MM

WEAR LAYER

0.5 MM

SIZE

150 X 600 MM

FINISH

EMBOSSED MATT

INSTALLATION METHOD

UNILIN UNICLIC



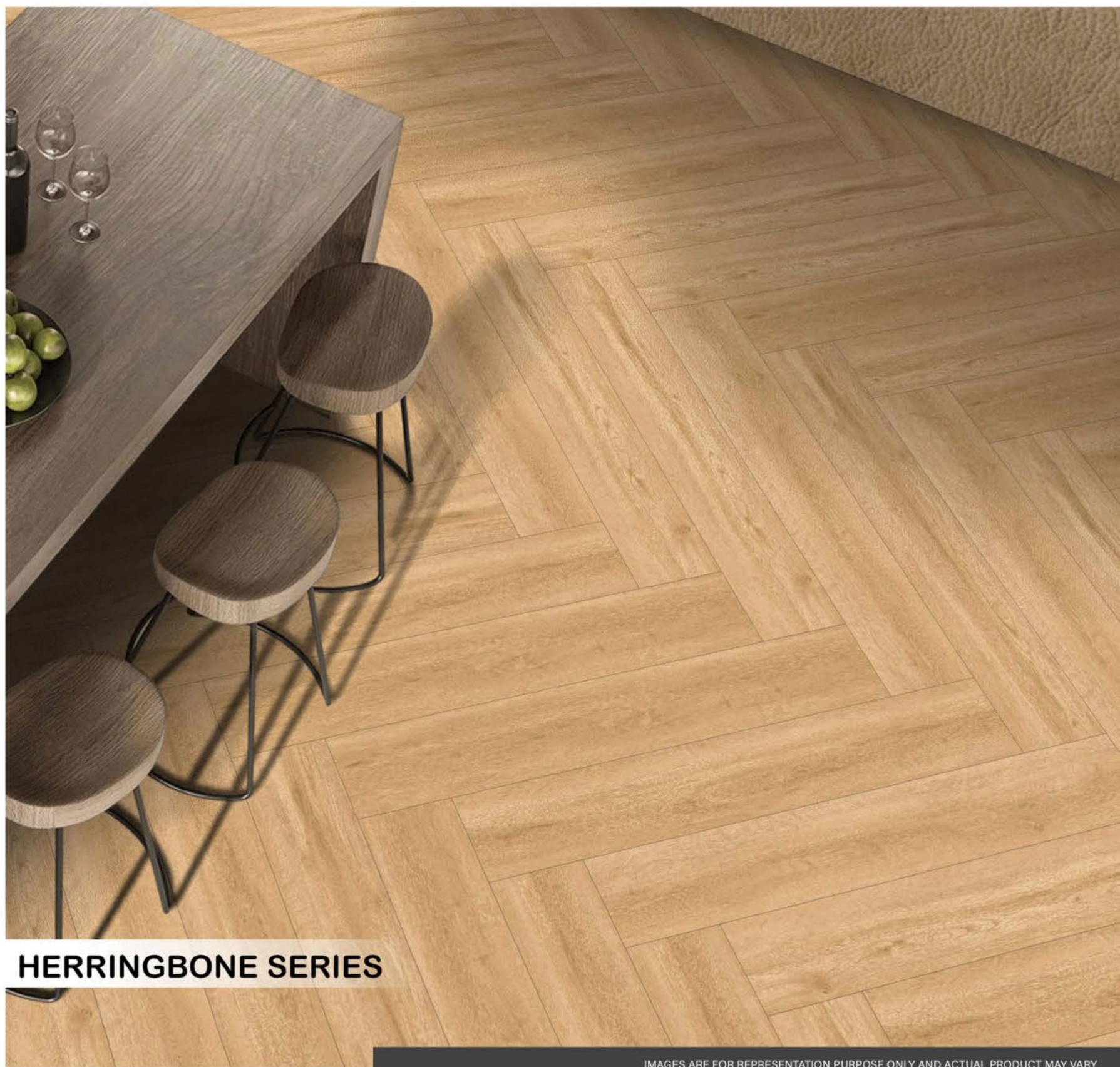
SCAN AND SEE THE
LIVE PHOTOS



Herringbone



Double Herringbone



HERRINGBONE SERIES



TECHNICAL SPECIFICATION

Property	Test Method	Result
Dimensions	EN 427	1220*180mm
Thickness Over All	EN 428	3.0 mm, 4.0 mm, 5.0 mm, 7.0 mm
Thickness Wear Layer	EN 429	0.3 mm, 0.5 mm
Pell Strength of Layers	EN 431	Pass
Shear Forces of Layers	EN 432	Good
Residual Indentations	EN 433	Mean Value \leq 0.1mm
Dimension Stability	EN 434	Shrinkage \leq 0.12%/Curling \leq 1.2mm
Resistance to Chemicals	EN 423	Class 0
Castot Chair Continuous	EN 425	No Disturbance/No Delamination
Light Fastness	ISO 105 B02	\geq 6
ASTM E84-03	NFPA Class B1	
Slip Resistance	DIN 51130	R9

Specification

SPC core thickness	4 to 6 MM
Wear layer	0.3 AND 0.5 MM
Plank Size	180 X 1220 MM AND 228.6 X 1219.2 MM AND 228.6 X 1524 MM
Padding	IXPE Black 1.00 AND 1.50 MM
Material	100 % Virgin
Click Lock	Unilin Uniclic
Warranty	25 Years Residential 10 Years Commercial

